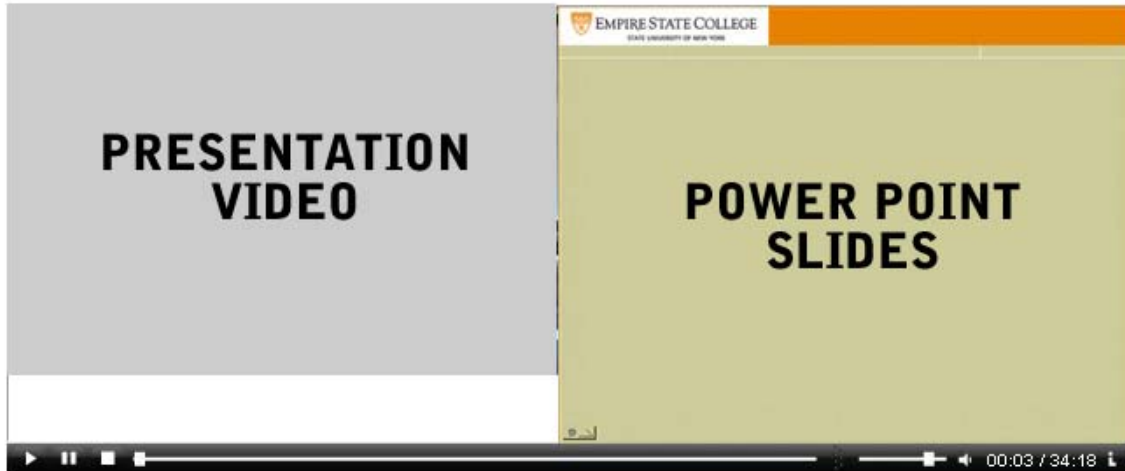


Using the Interactive Video/Power Points

There are a few presentations that have both video content and a power point attached. If you open one of these presentations, it will open a new browser and you will see something like this.

NOTE: Since these presentations involve video, don't worry if it takes a few moments to load. It will load as shown below.



As you can see, the slide show will be a little larger and to one side of the screen, while video of the given presentation will appear a little smaller to the side.

Below, you have a toolbar that allows you to control the volume, play/pause, or timing of the presentation.

NOTE: Since the slide show and the video are streamlined, when you skip a slide, the video will jump to that point in the presentation, as well.